

BREADLOAF / FLAT TOP ALUMINUM RAIL INSTALLATION INSTRUCTIONS

*2 person installation recommended

- 1.) Closely follow post installation instructions.
- 2.) Cut two 3" tall temporary wood spacer blocks (not included) to insert under ends of railing sections to temporarily assist in aligning section *Figure 1*.
- 3.) Slide top and bottom rail brackets on ends of pre-built rail sections *Figures 2 & 3*.
- 4.) Slide rail section and brackets between posts and on top of temporary wood spacer blocks. (Position wood spacer blocks next to installed aluminum posts) *Figure 1*.
- 5.) Using a $\frac{1}{8}$ " drill bit, carefully pre-drill all four bottom bracket screw holes on one post *Figure 4*.
- 6.) Install $\frac{3}{4}$ " screws (included) to attach bracket to post *Figure 5*.
- 7.) Repeat steps 5 & 6 for second bottom bracket.
- 8.) Using a $\frac{1}{8}$ " drill bit, pre-drill all four top bracket screw holes on one post *Figure 6*.
- 9.) Install $\frac{3}{4}$ " screws (included) to attach bracket to post *Figure 7*.
- 10.) Repeat steps 8 & 9 for second top rail bracket.
- 11.) Using a $\frac{1}{8}$ " drill bit, pre-drill all brackets (top and bottom) through side hole *Figure 8*.*
- 12.) Install $\frac{3}{4}$ " screws (included) into side bracket holes to attach brackets to rails *Figure 9*.*

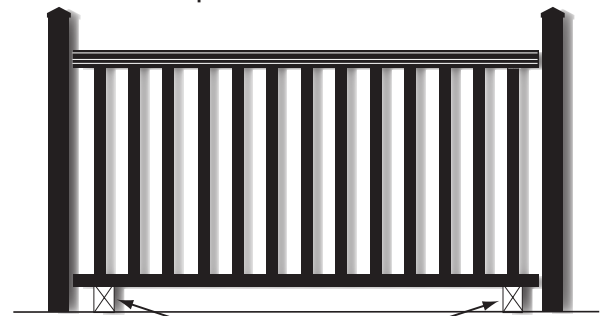


Figure 1

3" Temporary
Spacer Blocks

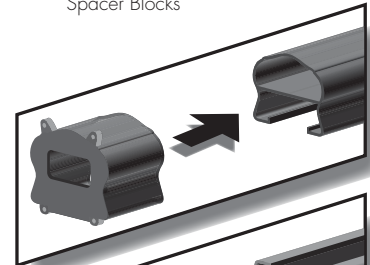


Figure 2

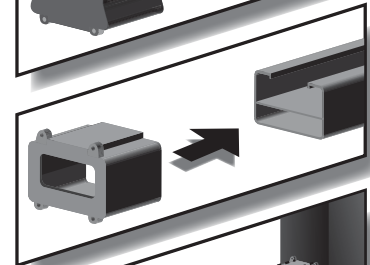


Figure 3

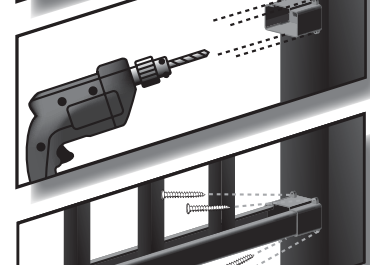


Figure 4

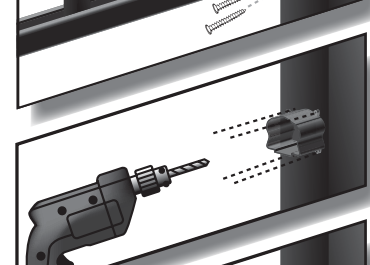


Figure 5

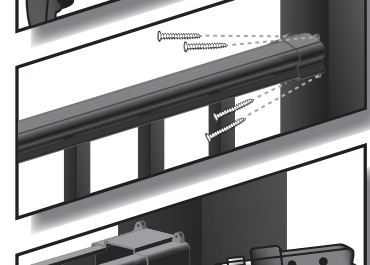


Figure 6

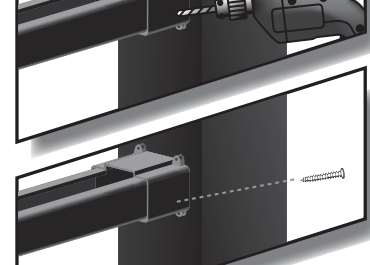


Figure 7



Figure 8

* Alternate the sides of brackets the screws will be installed to. On each rail section, make sure one screw is on the interior side of the brackets and the other screw is on the exterior side of the brackets.